

company | materials | services

Catalogue



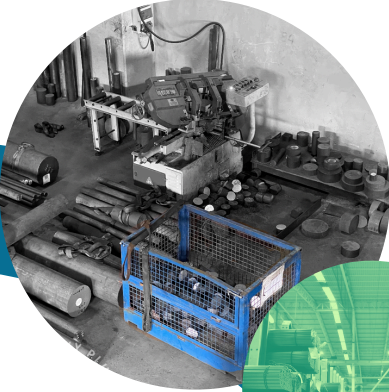
 kanatçelik

special steels for special partners

since 1984 with the experience comes from 1950s

we focus on **greensteel** 

about Kanat Çelik



Kanat Çelik, established in 1984 by the Bozdaş family in Istanbul, is a prominent Turkish company specializing in trade of high-quality steel products. With a family tradition in the steel industry spanning over 60 years, the company has developed extensive expertise in alloy steel trading. The company's product portfolio includes alloy steel bars (round, flat, square, hexagonal), seamless pipes and forged bars & blocks.

Kanat Çelik operates a steel service center that offers services like vertical cutting, testing, packaging and machining to meet specific customer requirements.

Kanat Çelik has ISO 9001:2015 Quality Management Systems and the company exports its products to more than 30 countries.

The company is committed to sustainability and actively engages in various initiatives to reduce its carbon footprint and promote environmentally friendly practices in the steel industry. It places great importance on trading products from manufacturers that implement Green Steel requirements.

Green steel refers to steel produced using environmentally friendly and sustainable methods. This usually involves using renewable energy sources, reducing carbon dioxide emissions, and minimising and recycling waste during the production process.

company milestones

1984



Kanat Çelik started its business life in 1984 as a sales office in Istanbul, Karaköy Perşembe Pazarı. **Today, with its 40 years of experience, Kanat Çelik offers products and services to more than 10 sectors with its own large stock.**

2000



Istanbul, İkitelli warehouse was opened.

2007



ISO 9001:2015 Quality Management System was established. **In this way, products and services at international standards are offered to different countries and sectors.**

2016



The construction of the Esenyurt warehouse was completed and all branches were combined under one roof.

2024



Export operations for UK market has started, and London-based **steelbars.co.uk** was established. The requirements of the **Green Transformation** and **Border Carbon Adjustment Mechanism** began to be implemented in our activities.

1991



2 Warehouses were opened in Istanbul, Bayrampaşa. Steel service center was established.

More than 100,000 cuts are made annually in the steel service center within Kanat Çelik.

2002



Kanat Çelik made its first export to Greece. Today, **Kanat Çelik exports steels to more than 30 countries.**

2010



Kanat Çelik made its first import from the Netherlands. **Today, Kanat Çelik imports and makes transit export steel that is not produced in Turkey or has limited production.**

2023



The construction of the Istanbul, Hadımköy warehouse began.

we focus on **greensteel**



www.kanatcelik.com

SECTORS & MATERIALS



Cectors

Kanat Çelik produces and supply the raw materials needed by the industry for manufacturing. Our products make significant contributions worldwide to simplify life and improve people's living standards.



Automotive



Machinery



Plastic and Mold



Fasteners



Defence



Agriculture



Mining



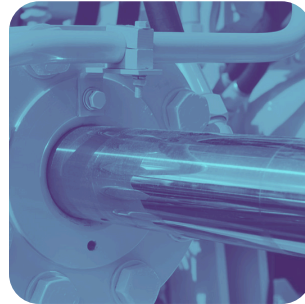
Aviation



Maritime



Renewable Energy



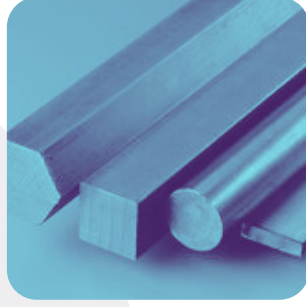
Hydraulics



Construction

steel shapes

Kanat Çelik keeps stock of steels in different shapes to suit your needs. Please check available shapes below. If your needed shape is not listed please contact with us.



Shapes	size range (mm)	
	min	max
Round Bars	1,00	1500,00
Flat Bars	20,00 x 5,00	2000,00 x 200,00
Square Bars	5,00 x 5,00	800,00 x 800,00
Hexagonal Bars	10,00	80,00
Seamless Pipes	21,30 x 2,60	610,00 x 110,00
Wire & Wire Rods	0,40	32,00
Special Profiles	upon request according to specification	



steel grades



Kanat Çelik maintains a stock of steel in various shapes to meet your requirements. Please refer to the available shapes listed below. If the shape you need is not included, feel free to contact us directly.

Some of steel grades are supplied as heat treated:

+QT (Quenched & Tempered) **+N** (Normalised) **+A** (Annealed)

Material No	EN	DIN	SAE/AISI/ASTM	BS	AFNOR
			1006		
			1008		
1.0037	S235Jr	St37-2	A283 Gr C	40A / 40B	E24-2
1.0044	S275Jr	St44-2	A529 Gr D	43A / 43B	E28-2
1.0045	S355Jr	St52-3		50B (EN14)	E36-2
1.0577	S355J2	St52-3			E36-4
1.0570	S355J2G3	St52-3+N			
1.0050	E295	St50-2			A50-2
1.0060	E335	St60-2			A60-2
1.0070	E360	St70-2			A70-2
1.0401	C15	Ck15	1018	080A15	XC18
1.1151	C22	Ck22	1020	070M20	XC18
1.0528	C30	Ck30	1030	080M32	XC32

steel grades

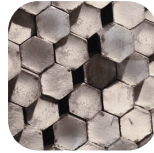


Material No	EN	DIN	SAE/AISI/ASTM	BS	AFNOR
1.0511	C40	Ck40	1040	080M40	XC38
1.0503	C45	Ck45	1045	080M47	XC45
1.0540	C50	Ck50	1050	080M50	
1.0601	C60	C60	1060	070M60	
1.7225	42CrMo4	42CrMo4	4140	708M40 (EN19)	42CD4
1.7227	42CrMoS4	42CrMoS4	4140	708M40 (EN19)	42CD4
1.6580	30CrNiMo8	30CrNiMo8	4340		30NCD8
1.6582	34CrNiMo6	34CrNiMo6		817M40 (EN24)	
1.7035	41Cr4	41Cr4	5140	530M40	42C4
1.7218	25CrMo4	25CrMo4	4130		25CD4
1.6523	20NiCrMo2-2	21NiCrMo2	8620	20NCD2	
1.7131	16MnCr5	16MnCr5	5115	590H17	16MC5
1.7139	16MnCrS5	16MnCrS5	5115	590H17	16MC5
1.7147	20MnCr5	20MnCr5	5120		20MC5
1.7149	20MnCrS5	20MnCrS5	5120		20MC5
1.6587	18CrNiMo7-6	17CrNiMo6		820A16	18NCD6
1.5752	15CrNi13	14NiCr14			
1.0715	11SMn30	9SMn28	1213	230M07	S250
1.0718	11SMnPb30	9SMnPb28	12L13		S250Pb
1.0736	11SMn37	9SMn36	1215		S300
1.0737	11SMnPb37	9SMnPb36	12L14		S300Pb
1.0725	15SMn13	15SMn13	1117	214M15	
1.3050	100Cr6	100Cr6	52100	535A99 (EN 31)	
1.4021	X20Cr13	X20Cr13	420		



surface finishes

Whatever you need, we offer it. We keep in stock hot rolled steel bars as well as bright steels with precise tolerances. For larger sizes, we offer forged steels with excellent toughness.

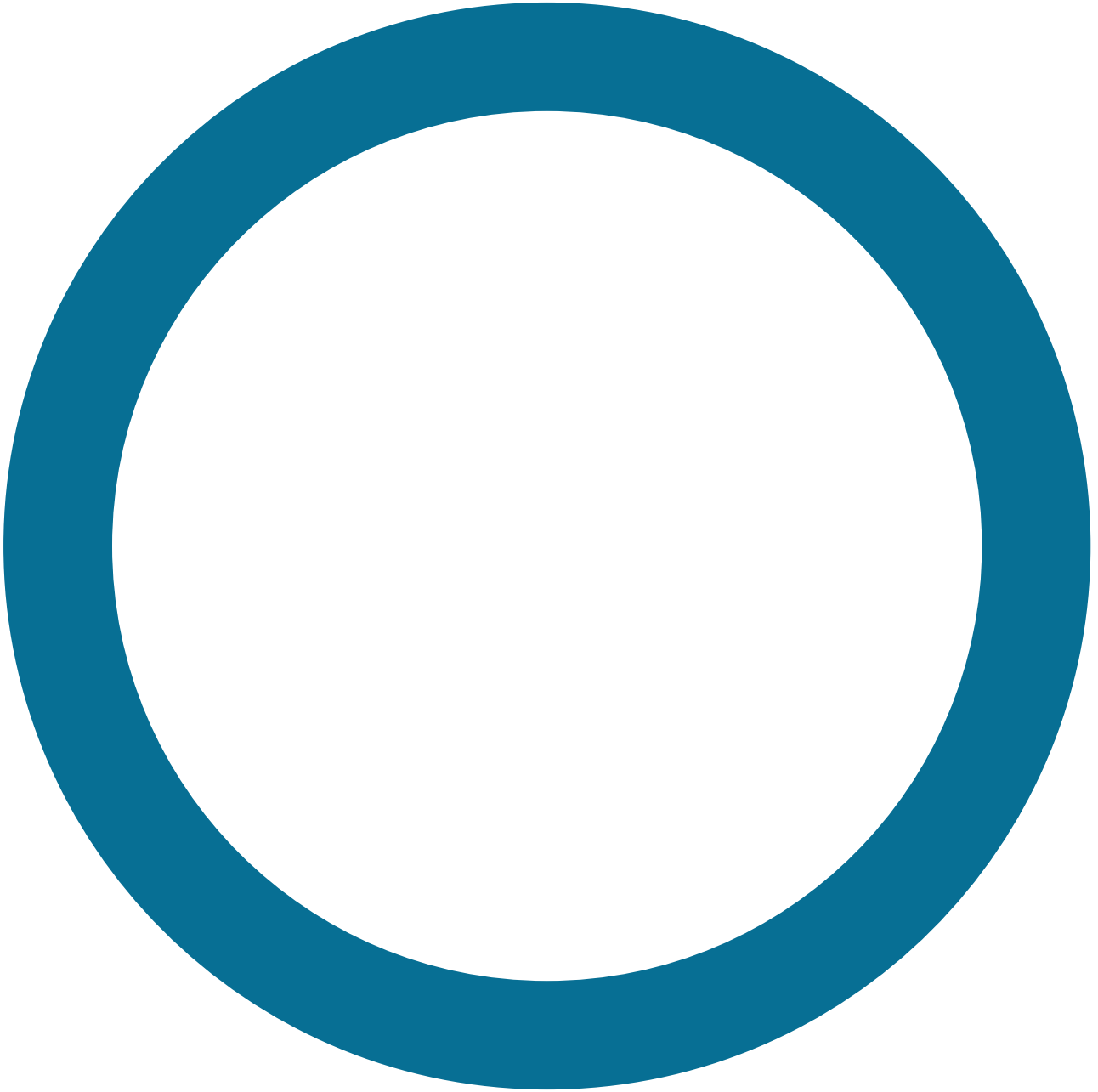


Hot Rolled Steels	Dimensional Tolerance	Size Range (mm)	
		Size Range (mm)	Size Range (mm)
Round Bars	EN 10060 (DIN 1013)	10,00	400,00
Flat Bars	EN 10058 (DIN 1017)	20,00x5,00	200,00x100,00
Square Bars	EN 10059 (DIN 1014)	10,00x10,00	300,00x300,00
Plates, Sheets	-	205,00x10,00	2000,00x200,00
Hexagonal Bars	EN 10061 (DIN 1015)	19,00	80,00
Wires, Wire Rods	-	5,50	42,00
Seamless Pipes	DIN 1629	21,30 x 2,60	610,00 x110,00
Special Profiles	Upon Customer's Specification		

Bright Steel	Dimensional Tolerances: EN 10278 (h9-h11) (DIN 671-668)					
	Cold Drawn Steel Bars		Peeled Steel Bars		Ground Steel Bars	
	min (mm)	max (mm)	min (mm)	max (mm)	min (mm)	max (mm)
Round Bars	1,00	100,00	20,00	75,00	16,00	85,00
Flat Bars	20,00x5,00	200,00x30,00				
Square Bars	5,00x5,00	80,00x80,00				
Hexagonal Bars	10,00	70,00				
Seamless Pipes	Upon Customer's Specification					
Wires, Wire Rods	0,40	12,00				

Forged Steels	Dimensional Tolerance	Size Range (mm)	
		Size Range (mm)	Size Range (mm)
Round Bars	According to Specification	190,00	1500,00
Flat Bars, Slabs		200,00x100,00	2000,00x100,00
Square Bars		200,00x200,00	800,00x800,00

SERVICES





Vertical Cutting

whether one piece or much more

Kanat Çelik operates 10 band saw machines at its cutting center, offering precise cut-to-size services for dimensions ranging from 20 mm up to 1010 mm.



Testing

your quality management can rely on us

Mill Test Certificates

We provide inspection certificates (2.1, 3.1) in order to have full traceability regarding country of origin and manufacturer.

Ultrasonic Tests (NDT)

Specific demands require special measures: On request we can arrange testings of the products by ultrasonic in order to ensure the highest quality.

Third Party Inspections

On request we can arrange all necessary approvals by classification and other audit companies (like TUV, SGS etc)



Packaging

we care about your products

Packaging service is an important part of our quality commitment. We work to protect products through the packaging process and minimize any damage that may occur during transportation.

Available Packaging Options: Steel Strapping, Jute Paper Packaging (seaworthy), Wooden Box, Plastic Ring, Anti-rust Spray Application (upon request)

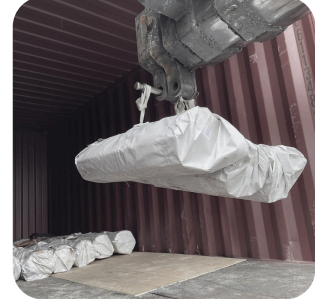


Machining

shape the world with Turkish Steel

Kanat Çelik provides custom manufacturing solutions such a CNC machining on a subcontract basis according to customer specifications.

import & export



IMPORT

Kanat Çelik imports steel products that are not produced or are produced in limited quantities in Turkey from all around the world. Our import partners are among the world's leading steel manufacturers. The imported products comply with international standards and are certified. Mainly imported materials are alloy bars, forged steels and seamless steel pipes.

EXPORT

Turkey is the largest steel producer in Europe and the 8th largest in the world. Since 2002, Kanat Çelik has been exporting its products to over 30 countries, continuously elevating our product and service quality to meet global standards.

Albania, Algeria, Belgium, Brazil, Bulgaria, Canada, Cuba, Cyprus, Egypt, France, Georgia, Greece, Hungary, India, Israel, Italy, Ivory Coast, Kazakhstan, Kenya, Kosovo, Macedonia, Mexico, Moldova, Morocco, Romania, Saudi Arabia, Serbia, Slovenia, Spain, Syria, Tunisia, UAE, Ukraine, Yemen



The texts, images, designs, and other materials in this catalog are the exclusive property of Kanat Çelik Sanayi ve Ticaret A.Ş. and are protected by copyright and other intellectual property rights ©
The information provided in this catalog is of a general nature, and Kanat Çelik Sanayi ve Ticaret A.Ş. makes no guarantee or commitment regarding its accuracy, completeness, reliability, or currency.

Kanat Çelik Sanayi Ve Ticaret Anonim Şirketi (A.Ş.)

Akçaburgaz Mah. 3038. Sok. No: 1 Esenyurt 34522, İstanbul - TÜRKİYE

T: 0090 212 671 38 38 F: 0090 212 886 59 94 M: 0090 535 715 11 22

E: info@kanatcelik.com W: www.kanatcelik.com